

EXCHANGE REPORT

The background of the cover is a photograph taken from an airplane window. It shows a bright sunset or sunrise with a gradient of colors from orange at the bottom to a pale blue at the top. The silhouette of the airplane's wing and tail is visible against the sky. The window frame is visible as a dark, curved border.

Global Business & Marketing
Lui Hoi Lam, Alyssa

SPRING
2020

University of
Warwick

TABLE OF CONTENT

Monthly Activity Log 2-5

General Exchange Information 6-8

Items to Bring 8

Useful Link and Contacts 8



MONTHLY ACTIVITY LOG

December

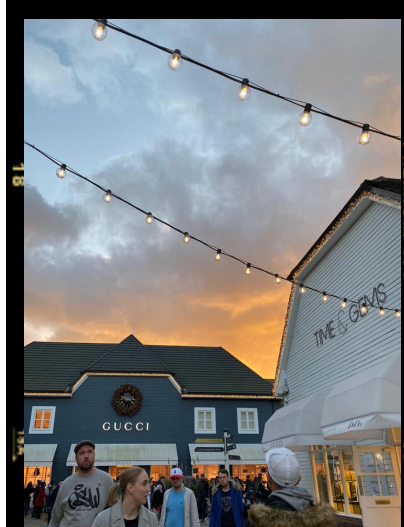
London, Oxford (UK)

I decided to have a short trip in London before the start of the semester. I arrived at the London Heathrow Airport on 30/12 and met up with my friends who were on exchange in Spain.

My first impression of London was that it's really cold. At that time, since Christmas just passed, there were still a lot of festive decorations and we went to the Winter Wonderland, an amusement park that only opened during Christmas period. We had a lot of fun in playing the booth games, roller coaster and other park facilities. I also watched a musical, called Wicked, visited China Town and British Museum.

On 31/12, we celebrated the countdown at Leicester Square. Although it was so crowded that I could hardly see the fireworks, I was still very excited because of the atmosphere there. Besides, we also went to Bicester Village in Oxford for shopping and sightseeing!

After a few days of travelling, I went to Warwick and checked in my hall in Senate House on 4/1.

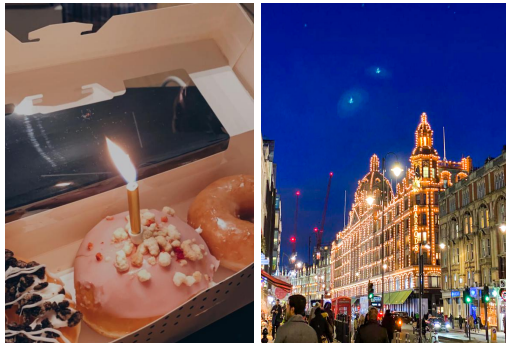
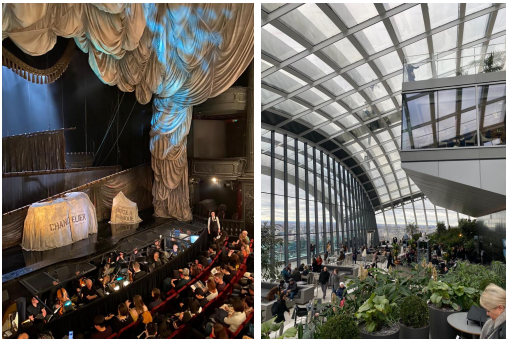


PREMIUM 400
17
18
19
2



January

Birmingham, London (UK) |
Paris (France) |
Amsterdam, Rotterdam,
Zaanse Schans (Netherlands)



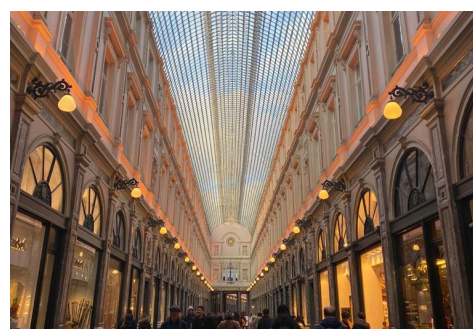
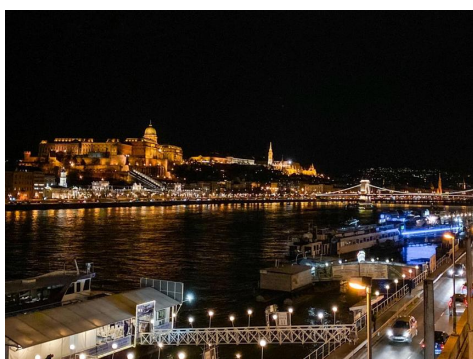
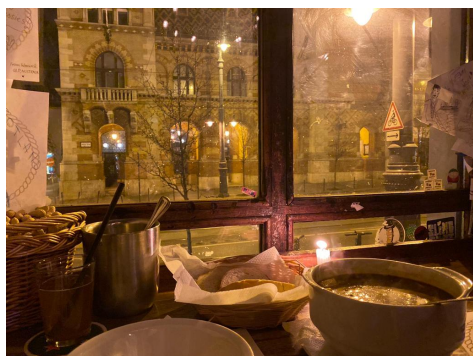
Since the semester just started and there's not much workload, I decided to travel more on January. I had a day trip in Birmingham with my secondary school friend. Then, I visited London again for watching *The Phantom of the Opera*, the best musical I have ever watched, and visited many touristy spots, such as Tower Bridge, London Eye and Big Ben!

After that, I took the flight from London to Paris to have a short birthday trip for myself. I love the food, arts, museums -- everything in Paris except the transportation strike. Nevertheless, I was still so grateful to be able to celebrate my birthday at Disneyland Paris and it's definitely one of the most joyful memories of the exchange. I was also so happy to visit my favorite museum, Louvre Museum, and tried the food at Angelina Paris and Le Comptoir de La Gastronomie.

Besides, I also visited Amsterdam with my friends who were on exchange there. My first impression of Amsterdam was that people are really friendly and there are many different types of museums. I strongly recommend you to visit Van Gogh museum and Stedelijk museum if you are passionate about modern art.

We also spent a day in Rotterdam to visit the Market Hall and see the modern designs of architectures and a day in Zaanse Schans to see the windmills and little green houses.





February

Brussels, Bruges, Gent (Belgium) |
Venice, Hallstatt (Austria) |
Slovakia | Budapest (Hungary)

On February, I had already get adapted to the new environment and started working on the essays when their topics were released.

Meanwhile, I had also spared some time for travelling. I visited Belgium for the first time and had plenty of chocolates, fries and waffles there. I had day trips in Gent and Bruges, and bumped into my batch mates who were on exchange there.

Also, I travelled in Eastern Europe with my friend. We went to watch an opera show in Venice and spent a day visiting the beautiful little village, Hallstatt. (Definitely worthwhile to go if you visit Austria.) After that, we also spent a day in Slovakia and then we went to Budapest.

Budapest is a beautiful city that really surprised me a lot. The food there was much cheaper and more diverse. We went to Széchenyi Thermal Bath to experience the bathing culture and had a lot of good food!





PREMIUM 400

17

PREMIUM 400

18

PREMIUM 400

19

PREMIUM 400

17

March

Lemington, Warwick, London, Manchester (UK)

I planned to stay in the UK for the beginning of March to finish all written assignments so that I could have more time to travel during Easter Break.

I visited the cities that are next to the University of Warwick, namely Lemington and Warwick. Since they were not tourist attractions, there was not much to see.

I also went to London again because my friend came visit me in the UK. We went to Warner Bros. Studio Tour London and tried the butter beer. If you are a die-hard fan of Harry Potter, you must not miss this tourist spot! Besides, we also went to Manchester for shopping.

Originally, I planned to go travelling in the Northern Europe during Easter Break and visit my friends in Spain and Germany. However, the number of confirmed cases of coronavirus suddenly surged in Europe. Most of my friends had to return to Hong Kong. Therefore, after consulting with my personal tutor in Warwick and knowing that examinations could be replaced by written assignments, I also decided to come back to Hong Kong and end my exchange earlier.



GENERAL EXCHANGE INFORMATION

1) *Visa Procedures*

You don't need to apply for a visa before exchange if you are a Hong Kong passport holder. All you have to do is to prepare the required documents, such as your letter of support issued by Warwick University and bank statements, and show them to the immigration officers upon your arrival at the airport. They will grant you the short-term visa by putting a stamp on your passport. And from my own experience, the immigration officers don't always go through all the required documents. Instead, they will ask you questions about why you come there and how long you will stay. Remember to bring along the documents whenever you travel to other countries as the short-term visa will be reissued every time you enter the UK border.

2) *Orientation Activities*

Frankly speaking, there were not many orientation events available for us. I remember that there was a talk organized by Warwick Business School that briefly introduced the campus environment and some school-organized trips to nearby cities. It was a great chance for me to meet other exchange students and make more friends.

On a side note, every exchange student will also be assigned to a personal tutor (usually a professor from Warwick Business School) and you will have to meet them twice throughout the whole exchange. My personal tutor was super nice and helpful. If you want to seek help to get adapted into a new environment, you may consider contacting your personal tutor.

3) *Accommodations*

The hall I lived was Jack Martin 1 and I like it a lot even though it was not my first choice. Jack Martin is located at the campus center and super near to Senate House, all the academic buildings and the bus station. It only takes 5 mins for me to walk from Jack Martin to the business school building. Also, all the rooms are with en suite bathrooms and are very clean. I shared the kitchen with 9 hall mates. At first, I was a little worried about sharing the kitchen with so many people. However, it turned out to be a great chance for me to make friends with more local students.

There is one thing you need to be aware of for choosing Jack Martin, which is Jack Martin does not provide accommodation during Easter Break. It means you have to check out the hall on March. You may leave your large luggage in the storage room by asking the hall tutor. Since I planned for travelling during Easter Break, it wasn't a big issue for me. Yet, if you want to stay at the campus and need an accommodation place, you can still apply for a temporary hall space in Senate House on March but you will not be able to choose the hall and need to pay additional fees.

4) *Sports & Recreation Facilities*

I heard that there is a gym at the campus and requires a membership fee. I have never been there so I could not comment much.

Accommodations

5) *Social Clubs & Networking Opportunities*

There are different social clubs available for you to join but most require a membership fee and it is not cheap.

6) Courses Registration

At Warwick, we usually refer it as module application. And Warwick Business School has a separated system for registering modules. Each exchange student is not able to study more than 72 CATS (a module is usually 12/15 CATS). Remember to check the module handbook to see which modules would be available for the semester that you go.

If you want to register courses that are not under business school, there are several steps that you need to go through when you arrive at the campus. First, you need to get an application form (which will be issued during the orientation talk or you may also find it online). Second, you need to go the faculty office of the course that you want to study and see if there are spaces left and get the sign. After that, you need to submit the form to the undergraduate office of Warwick Business School. It is better for you to do as soon as possible as the whole process takes time.

8) Finance & Banking

I opened a UK account (with a debit card) at HSBC when I was still in Hong Kong. Using debit card was very common and convenient in the UK as most, if not all, places accept cashless payments. Also, I could use the same card for travelling in other European countries and purchasing things online.

10) Food

There are a number of restaurants available on the campus. Yet, dining-in could be quite expensive in the UK so I usually choose to cook by myself. There are two supermarkets near the campus which are TESCO and ALDI. It usually takes 15-20 minutes of walk from campus to the supermarkets. TESCO has a wider variety of food while ALDI has a slightly lower pricing. There is also a supermarket, called Rootes, on the campus but it has less product variety and is generally more expensive.

7) Teaching & Assessment Methods

The modules usually consist of lectures and seminars. Lecture normally does not require attendance but seminar does. I personally prefer seminars more as they are small-group classes that involve discussions and are more interactive. (On a side note, you can swap your seminar at the undergraduate office of Warwick Business School) In general, professors want the classes to be as interactive as possible and students are very proactive in raising questions. Besides, for assessment methods, some of my modules consisted of examinations originally, but due to covid-19, all of my examinations changed into written assignments. All of my modules were assessed by the written assignments.

9) Health & Safety

There is a clinic on campus and you need to make appointments for meeting the doctor. From my own experience, Warwick is a very safe environment and I honestly didn't worry much about the safety.

11) Transportation

There is a central bus station on the campus. You can take 12X and 11 bus to go to the Coventry train station and it costs £2.2 (single-trip) and £4 (a day). After you arrive at the train station, you can easily travel to Birmingham, London or other major cities. There is an international airport in Birmingham that you can take flights to almost all European countries and you don't always have to go to the airports in London. You are strongly suggested to buy the 16-25 railcard as it saves 1/3 of the original train ticket price every time when you take railways. You are also recommended to buy your train/flight tickets as early as possible for more discounts.

12) Climate

As you can imagine, the weather in UK is pretty unpredictable. It rains so frequently that people don't even bother to open their umbrellas. Maybe because of its humidity, it is extremely cold (and also windy) in winter. Also, the daytime is surprisingly short in winter that the sky became completely dark at around 4/5 pm, which is very different from Hong Kong's weather.

13) Communication

WiFi is provided on the campus but it was not very stable. Therefore, I was always using my phone data. The one I used was a monthly pay-as-you-go plan from Three. I bought it in Hong Kong but you can still get it easily in supermarket in the UK as well. This monthly plan covers the network I used not just in UK but in other European countries. It was stable and fast.

14) Cautionary measures

Remember to bring some face masks (and medicine ofc) before exchange. Before the outbreak of covid-19 in the UK, I have gone to several grocery stores and supermarkets to see if face masks are available. I didn't expect it could be so hard to find stores that sell face masks but it just happened in the UK. I was lucky that my friends have bought extra face masks online before and they could give a few to me. So please remember to prepare masks for yourself even if this pandemic ends as you can never predict accidents. Also, don't be afraid to wear it for your self-protection!

ITEMS TO BRING

- Laptop
- Charger
- Adaptor
- Notebook & Stationary
- Passport & HKID
- A small hand luggage
- Medicines
- Face masks
- Gloves
- Letter of Support
- Camera
- Backpack

USEFUL LINKS AND CONTACTS

- **University of Warwick Exchange Program Website**
<https://warwick.ac.uk/study/studyabroad/>
- **Making payments**
www.warwick.ac.uk/academicoffice/finance
- **Warwick Accommodation**
<http://www2.warwick.ac.uk/services/accommodation/studentaccommodation>
- **Campus postal address and deliveries**
<http://www2.warwick.ac.uk/services/estates/post/students>